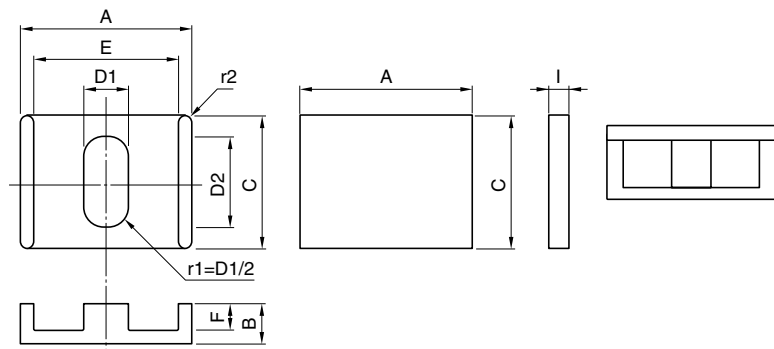


形状・寸法／特性

Shapes and dimensions/Characteristics



形状 Type	通称 Alias	寸法 Dimensions(mm)										
		A	B+I	B	C	D1	D2	E	F min.	I	r1	r2
EIRS-9.2K	—	9.15±0.15	2.6	1.7±0.10	7.15±0.15	2.3±0.10	5.2±0.15	7.6±0.20	1.7±0.10	0.9±0.1	1.15	0.2
EIRS-11J	BM-11/2.0	11.0±0.20	3.02	2.01±0.10	8.80±0.20	2.78±0.10	6.40±0.15	9.17±0.20	1.00±0.10	1.01±0.05	1.39	0.3
EIRS-11H	BM-11/3.0	11.0±0.20	4.02	3.01±0.10	8.80±0.20	2.78±0.10	6.40±0.15	9.17±0.20	2.00±0.10	1.01±0.05	1.39	0.3
EIRS-13J	BM-13/2.2	13.0±0.25	3.38	2.19±0.10	10.40±0.20	3.29±0.10	7.56±0.15	10.83±0.20	1.00±0.10	1.19±0.05	1.645	0.3
EIRS-13H	BM-13/3.2	13.0±0.25	4.38	3.19±0.10	10.40±0.20	3.29±0.10	7.56±0.15	10.83±0.20	2.00±0.10	1.19±0.05	1.645	0.3
EIRS-15.5J	BM-15.5/2.9	15.5±0.30	4.34	2.92±0.10	12.40±0.25	3.92±0.10	9.01±0.20	12.92±0.25	1.50±0.10	1.42±0.10	1.96	0.3
EIRS-15.5H	BM-15.5/4.4	15.5±0.30	5.83	4.42±0.10	12.40±0.25	3.92±0.10	9.01±0.20	12.92±0.25	3.00±0.10	1.42±0.10	1.96	0.3
EIRS-18J	BM-18/3.7	18.0±0.3	5.30	3.65±0.10	14.40±0.25	4.55±0.10	10.47±0.20	15.0±0.30	2.00±0.10	1.65±0.10	2.275	0.3
EIRS-18H	BM-18/5.7	18.0±0.3	5.30	5.65±0.10	14.40±0.25	4.55±0.10	10.47±0.20	15.0±0.30	4.00±0.10	1.65±0.10	2.275	0.3
EIRS-20J	BM-20/3.8	20.0±0.35	2.66	3.83±0.10	16.00±0.3	5.06±0.15	11.63±0.20	16.67±0.30	2.00±0.10	1.83±0.10	2.53	0.5
EIRS-20H	BM-20/5.8	20.0±0.35	4.66	5.83±0.10	16.00±0.3	5.06±0.15	11.63±0.20	16.67±0.30	4.00±0.10	1.83±0.10	2.53	0.5
EIRS-22J	BM-22/4.0	22.0±0.40	6.04	4.02±0.10	17.6±0.30	5.56±0.15	12.79±0.25	18.33±0.35	2.00±0.10	2.02±0.10	2.78	0.5
EIRS-22H	BM-22/6.0	22.0±0.40	8.04	6.02±0.10	17.6±0.30	5.56±0.15	12.79±0.25	18.33±0.35	4.00±0.10	2.02±0.10	2.78	0.5
EIRS-25J	BM-25/4.3	25.0±0.45	6.58	4.29±0.10	20.00±0.35	6.32±0.15	14.54±0.25	20.83±0.35	2.00±0.10	2.29±0.10	3.16	0.5
EIRS-25H	BM-25/6.3	25.0±0.45	8.58	6.29±0.10	20.00±0.35	6.32±0.15	14.54±0.25	20.83±0.35	4.00±0.10	2.29±0.10	3.16	0.5

形状 Type	通称 Alias	AL value(nH/N ²)±25%					コア定数 Core parameters					Weight (g/set)
		MB1	MB3/MB4	MBT1	MBF4	MC2	C _i (mm ⁻¹)	Le(mm)	Ae(mm ²)	Amin(mm ²)	Ve(mm ³)	
EIRS-9.2K	—	1430	1600	1840	1470	1080	0.943	11.6	12.3	10.8	142	0.76
EIRS-11J	BM-11/2.0	1930	2170	2490	1980	1460	0.701	11.7	16.7	16.1	194	0.97
EIRS-11H	BM-11/3.0	1760	1990	2310	1810	1310	0.825	13.7	16.6	16.1	227	1.14
EIRS-13J	BM-13/2.2	2580	2920	3380	2660	1920	0.557	13.4	23.3	22.5	313	1.57
EIRS-13H	BM-13/3.2	2290	2600	3050	2360	1680	0.666	15.4	23.2	22.5	358	1.79
EIRS-15.5J	BM-15.5/2.9	3120	3560	4200	3210	2270	0.503	16.6	33.0	32.0	550	2.75
EIRS-15.5H	BM-15.5/4.4	2790	3210	3830	2880	2000	0.597	19.6	32.9	32.0	645	3.23
EIRS-18J	BM-18/3.7	3750	4330	5170	3880	2680	0.445	19.8	44.5	43.1	883	4.42
EIRS-18H	BM-18/5.7	3290	3830	4630	3400	2310	0.538	23.8	44.3	43.1	1060	5.30
EIRS-20J	BM-20/3.8	4380	5080	6100	4530	3110	0.392	21.6	55.0	53.2	1190	5.95
EIRS-20H	BM-20/5.8	3870	4520	5500	4010	2700	0.467	25.6	54.7	53.2	1400	7.00
EIRS-22J	BM-22/4.0	5010	5830	7040	5180	3530	0.351	23.3	66.6	64.4	1550	7.75
EIRS-22H	BM-22/6.0	4450	5220	6380	4620	3100	0.413	27.3	66.3	64.4	1810	9.05
EIRS-25J	BM-25/4.3	6010	7030	8550	6220	4190	0.302	26.0	86.1	83.2	2240	11.20
EIRS-25H	BM-25/6.3	5390	6340	7790	5590	3710	0.350	30.0	85.7	83.2	2570	12.85