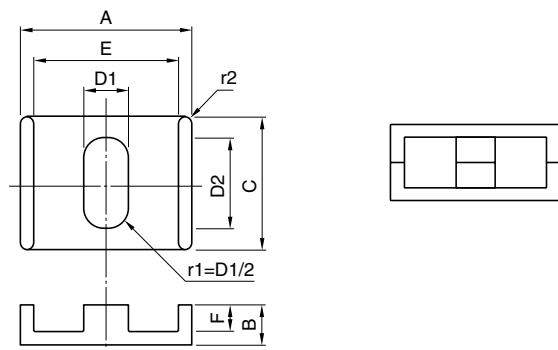


形状・寸法／特性

Shapes and dimensions/Characteristics



形状 Type	通称 Alias	寸法 Dimensions(mm)										
		A	2B	B	C	D1	D2	E	2F min.	F	r1	r2
EERS-11J	BM-11/2.0	11.0±0.20	4.02	2.01±0.10	8.80±0.20	2.78±0.10	6.40±0.15	9.17±0.20	1.80	1.00±0.10	1.39	0.3
EERS-13J	BM-13/2.2	13.0±0.25	4.38	2.19±0.10	10.40±0.20	3.29±0.10	7.56±0.15	10.83±0.20	1.80	1.00±0.10	1.645	0.3
EERS-15.5J	BM-15.5/2.9	15.5±0.30	5.84	2.92±0.10	12.40±0.25	3.92±0.10	9.01±0.20	12.92±0.25	2.80	1.50±0.10	1.96	0.3
EERS-18J	BM-18/3.7	18.0±0.30	7.30	3.65±0.10	14.40±0.25	4.55±0.10	10.47±0.20	15.00±0.30	1.80	2.00±0.10	2.275	0.3
EERS-20J	BM-20/3.8	20.0±0.35	7.66	3.83±0.10	16.00±0.30	5.06±0.15	11.63±0.20	16.67±0.30	1.80	2.00±0.10	2.53	0.5
EERS-22J	BM-22/4.0	22.0±0.40	8.04	4.02±0.10	17.60±0.30	5.56±0.15	12.79±0.25	18.33±0.35	1.80	2.00±0.10	2.78	0.5
EERS-25J	BM-25/4.3	25.0±0.45	8.58	4.29±0.10	20.00±0.35	6.32±0.15	14.54±0.25	20.83±0.35	1.80	2.00±0.10	3.16	0.5

形状 Type	通称 Alias	AL value(nH/N ²)±25%					コア定数 Core parameters					Weight (g/set)
		MB1	MB3/MB4	MBT1	MBF4	MC2	Ci(mm ⁻¹)	Le(mm)	Ae(mm ²)	Amin(mm ²)	Ve(mm ³)	
EERS-11J	BM-11/2.0	1760	1990	2310	1810	1310	0.825	13.7	16.6	16.1	227	1.14
EERS-13J	BM-13/2.2	2290	2600	3050	2360	1680	0.666	15.4	23.2	22.5	358	1.79
EERS-15.5J	BM-15.5/2.9	2790	3210	3830	2880	2000	0.597	19.6	32.9	32.0	645	3.23
EERS-18J	BM-18/3.7	3290	3830	4630	3400	2310	0.538	23.8	44.3	43.1	1060	5.30
EERS-20J	BM-20/3.8	3870	4520	5500	4010	2700	0.467	25.6	54.7	53.2	1400	7.00
EERS-22J	BM-22/4.0	4450	5220	6380	4620	3090	0.413	27.3	66.3	64.4	1810	9.05
EERS-25J	BM-25/4.3	5390	6340	7790	5590	3710	0.350	30.0	85.7	83.2	2570	12.85