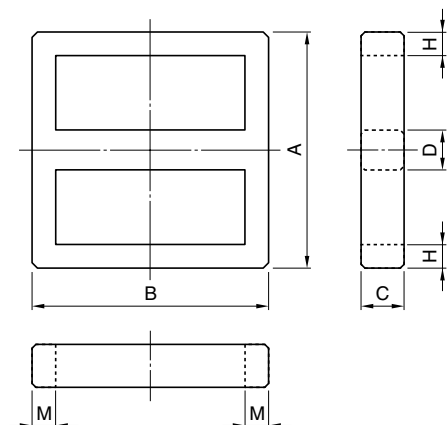


形状・寸法/特性

Shapes and dimensions/Characteristics



形状 Type	寸法 Dimensions(mm)					
	A	B	C	D	H	M
ET-20A	20.6±0.5	20.6±0.5	4.40±0.20	4.00±0.20	2.00±0.20	2.00±0.20
ET-24A	24.2±0.5	24.2±0.5	4.00±0.30	4.00±0.20	2.40±0.15	2.40±0.15
ET-28A	28.45±0.55	28.45±0.55	5.00±0.30	5.00±0.20	2.90±0.15	2.90±0.15
ET-35A	35.3±0.6	35.3±0.6	7.50±0.30	7.50±0.25	4.00±0.25	4.00±0.20
ET-35B	33.1±0.6	35.4±0.4	7.50±0.30	7.50±0.30	(3.80)*	(3.80)*

*() are typical values.

形状 Type	AL value(nH/N ²)				コア定数 Core parameters					Weight (g)
	MA055	MA070	MA085	MA100	C ₁ (mm ⁻¹)	Le(mm)	Ae(mm ²)	Amin(mm ²)	Ve(mm ³)	
ET-20A	2340±30%	3050±30%	3610±30%	4250±30%	2.96	52.1	17.6	17.6	917	4.64
ET-24A	2020+40,-25%	2570+40,-25%	3130+45,-25%	3680+45,-25%	3.42	61.0	17.8	16.0	1090	5.62
ET-28A	2650+45,-25%	3370+45,-25%	4090+45,-25%	4820+45,-30%	2.61	71.4	27.4	25.0	1950	10.0
ET-35A	4670+40,-25%	5940+40,-25%	7220+40,-30%	8490+45,-30%	1.48	86.7	58.6	56.3	5080	25.9
ET-35B	4590+40,-25%	5840+40,-25%	7090+40,-30%	8340+45,-30%	1.51	85.5	56.7	56.3	4850	24.7